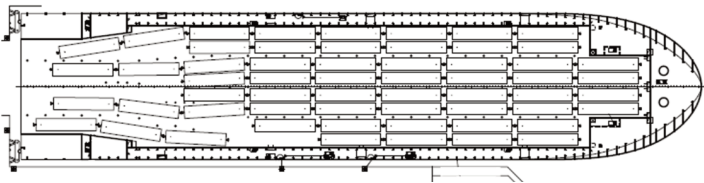
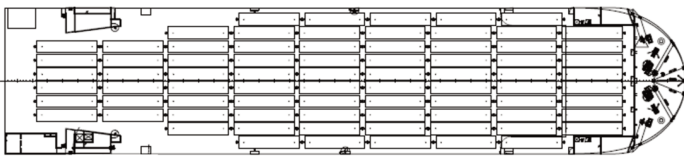
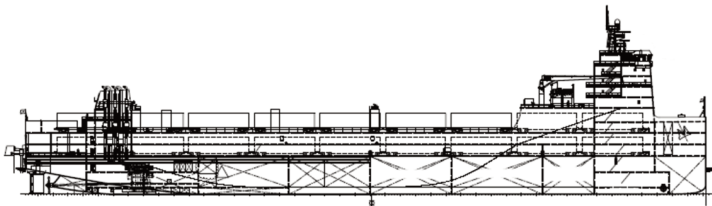


# CG Railway New Rail-Ferry Construction



Length	180m (590')
Length BP	176.8m (580')
Breadth	36.6m (120')
Depth	10m (32' 10")
Summer Load Line Draft	6.9m (22' 8")
Design Draft	6.7m (22')
Gross Registered Tonnage	30,102 (est)
Net Registered Tonnage	9,031 (est)
Deadweight ( <i>Design Draft</i> )	18,950mt
Deadweight ( <i>Summer Load Line Draft</i> )	20,210mt
Capacity Railcars	135 of 57' cars
Max Car Weight	130mt, with higher weights and/or dimensional loads accommodated with the proper railcar
Fuel Oil	2,695 cubic meters
Ballast	29,879 cubic meters
Service Speed	14 knots
Range	>20,000 miles
Accommodations	Crew of 28
Propulsion	Twin screw slow speed diesel engines rated at 4,800kW MCR with controllable pitch propellers
Generators	Three diesel-driven generators one rated at 1330kW and two rated at 1164kW

Classes of Dangerous Goods  
IMDG Class 1.1 to 1.6, 1.4S, 211, 2.2, 2.3, 3, 4.1 to 4.3, 5.1, 5.2, 6.1, 8 and 9

**HOFFMAN LIJERON**  
PRESIDENT  
+1 (904) 440-7070  
[hlijeron@cgrailway.com](mailto:hlijeron@cgrailway.com)

**CG RAILWAY, LLC**  
13901 SUTTON PARK DRIVE SOUTH  
SUITE 175C  
JACKSONVILLE, FL 32224  
+1 (904) 440-7075

